

PROMAUT

Promaut Group, is an industrial group offering global solutions in:

- **Conceptual design**
- **Automation engineering**
- **Manufacturing and commissioning** of productive lines by:
 - Manufacturing and assembly of **productive means**
 - **PLC's and robot** programming
- **Technical assistance**

We were founded in 1995 to **bring together companies and industrial products leaders in their markets** and thereby meet technical and financial strength which market requires today.

Companies composing **Promaut Group** have extensive **international experience** in **Automotive, Aeronautics, Railway and Petrochemical** key industries.

ROBOTIC SOLUTIONS FOR RAILWAY INDUSTRY



Automatitzacio de processos i mediambient SL
C. Andorra 22
08830 Sant Boi de Llobregat
Barcelona (Spain)
info@promaut.com
www.promaut.com



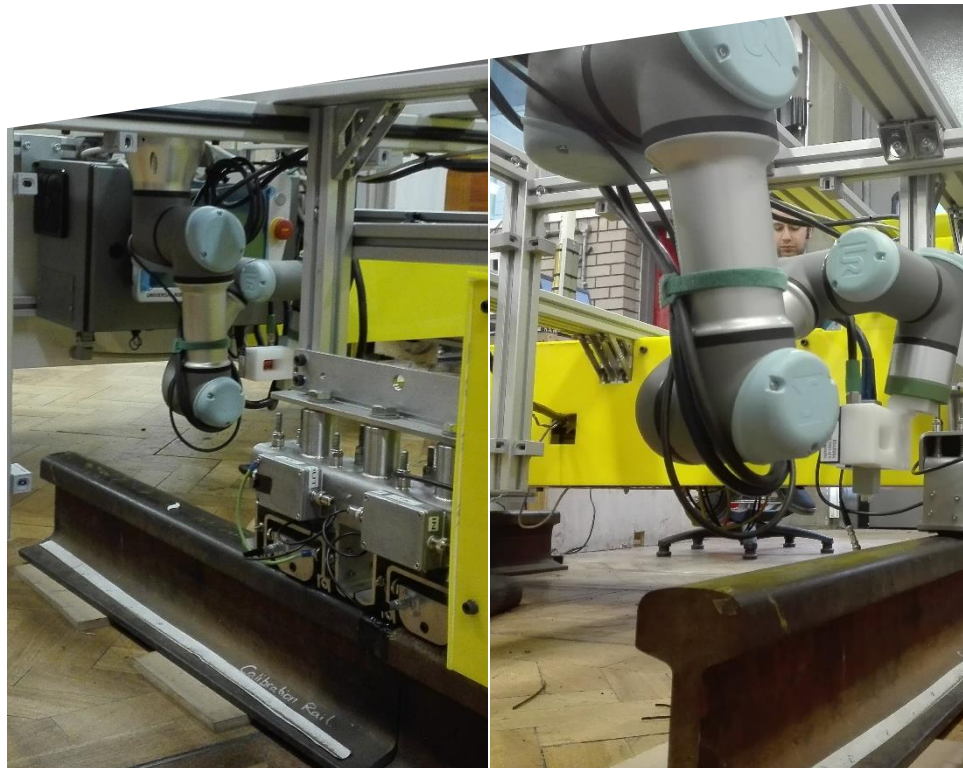
Leaders in Automation Technologies

ROBOTIC SOLUTIONS FOR RAILWAY INDUSTRY

Robust and safe solutions for inspection processes

The robot can integrate **all types of sensors, cameras and inspection instruments.**

The robot can place the inspection sensor in any part of the rail or track with **precision, speed and accuracy.**



SAFETYNESS AND ROBUSTNESS

These robots are specially prepared to work in collaboration with people. They are manufactured according to EN ISO:13849:2008 PL d – EN ISO 10218-1:2011 Clause 5.4.3.



AUTOMATIC CONTROL

Robot can be programmed easily. Robot movements can be programmed with the hand. The robot is controlled by PC or teach pendant with user friendly software.



OUTDOOR ENVIRONMENT

IP 65 certified. The robot can work in a temperature range 0-50°C



SPEED

Quick connection and fast movements



LOW COST MAINTENANCE

Reduced maintenance cost and centralized data management.